

Milliken®

# COFLEX TLC

Two-Layer Compression

## PORTFOLIO OVERVIEW



Milliken™



Milliken Healthcare

Improving Patient Lives. Together.



QUALITY



VARIETY +  
CUSTOMIZATION



COHESIVE  
EXPERTISE



UNMATCHED  
INNOVATION



EASYTEAR  
TECHNOLOGY



CLINICAL  
SUPPORT



BREATHABLE +  
LIGHTWEIGHT

Milliken's CoFlex TLC® two layer compression kits are designed to enhance the experience of both the clinician and patient.

Clinicians can choose from a wide variety of options to best solve their patients' needs with the same easy application.

Patients will enjoy the comfort the systems provide which has been known to increase compliance.

You can trust that Milliken's Made in the USA quality products will help deliver a streamlined approach and excellent care in the treatment of venous leg ulcers.





## THE COFLEX TLC DIFFERENCE

### Ease of Use

- Offers a comprehensive family of products
- Two-step, quick, easy application
- Promotes safety through consistent application across entire line
- Features EasyTear technology for convenience

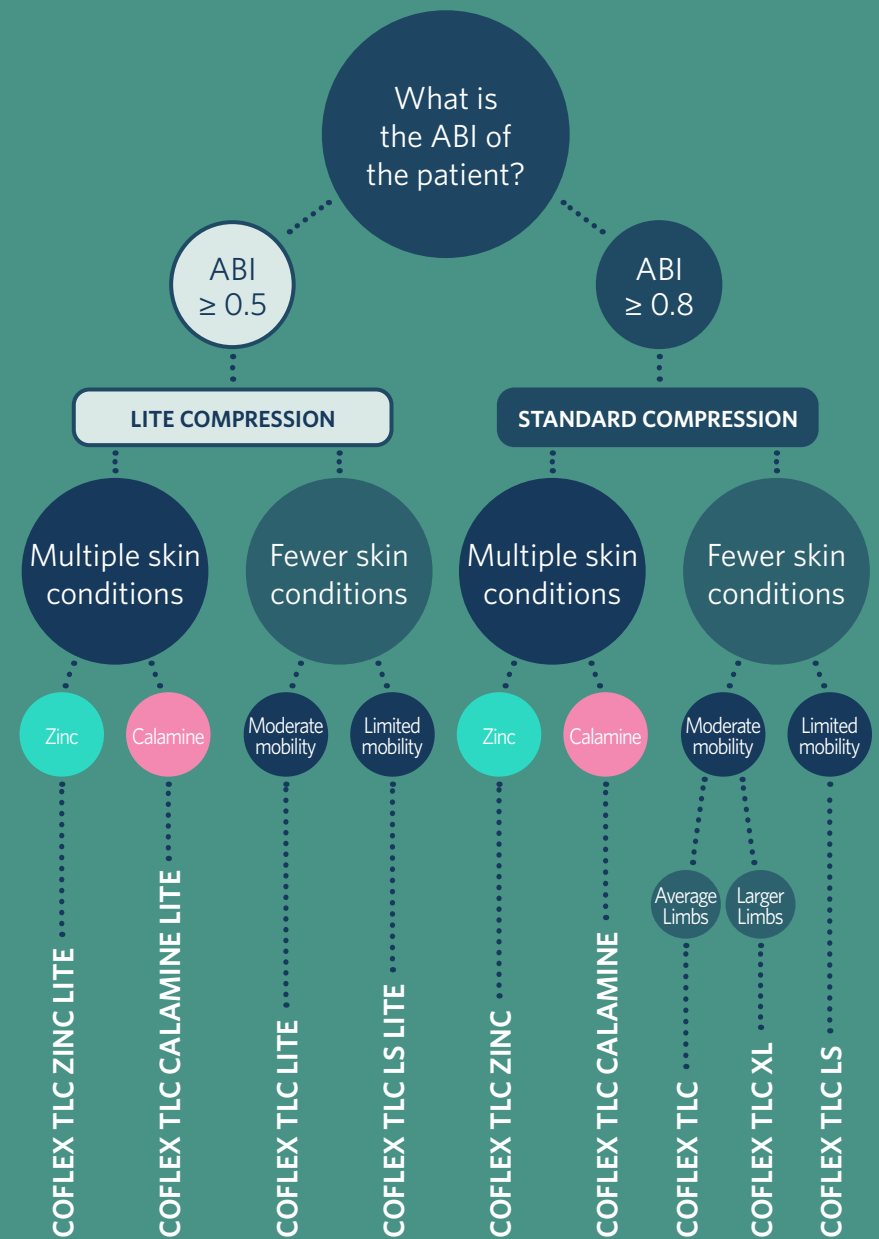
### Patient Comfort

- Stays in place
- Provides comfort during wear
- Conforms to patient's anatomy
- Dry options have odor and itch control, Zinc/Calamine options have soothing effect on irritated skin
- Promotes longer wear time with high vapor transfer rate

### Effective Compression

- Features visual indicators to guide intended compression
- Provides restorative compression for patient needs

Milliken's CoFlex TLC, Zinc, Calamine and Long Stretch kits portfolio provides a two-step level of comfort and healing unlike any other two-layer compression on the market, including odor and itch control.





SOOTHES  
+ CALMS

COFLEX TLC  
ZINC

COFLEX TLC  
CALAMINE

## COFLEX TLC ZINC & CALAMINE

Milliken's CoFlex TLC Zinc and Calamine kits are designed to simplify and streamline the clinician's job while providing comfort to the patients.

- Soothes and calms skin with multiple skin conditions
- 50% more Zinc or Calamine than traditional Unna Boots
- Visual indicators to guide restorative compression application
- Comfortable and breathable
- Non-slip support
- Easy to apply
- Nylon stocking included in each kit

### VISUAL INDICATORS

Designed to support application and intended compression



Available in Lite and Standard Compression

Not made with natural rubber latex

Catalog #	Description	Layer 1 (Unstretched)	Layer 2 (Stretched)	HCPCS Code*
8840UBZ-TN	CoFlex TLC Zinc Lite - Lite Compression - 4"	Zinc Foam - 4" x 6 yds.	Compression - 4" x 7 yds.	A6456 & A6452
8840UBZ-SC	CoFlex TLC Zinc - Standard Compression - 4"	Zinc Foam - 4" x 6 yds.	Compression - 4" x 7 yds.	A6456 & A6452
8840UBC-TN	CoFlex TLC Calamine Lite - Lite Compression - 4"	Calamine Foam - 4" x 6 yds.	Compression - 4" x 7 yds.	A6456 & A6452
8840UBC-SC	CoFlex TLC Calamine - Standard Compression - 4"	Calamine Foam - 4" x 6 yds.	Compression - 4" x 7 yds.	A6456 & A6452
8830UBZ-TN	CoFlex TLC Zinc Lite - Lite Compression - 3"	Zinc Foam - 3" x 6 yds.	Compression - 3" x 7 yds.	A6456 & A6452
8830UBZ-SC	CoFlex TLC Zinc - Standard Compression - 3"	Zinc Foam - 3" x 6 yds.	Compression - 3" x 7 yds.	A6456 & A6452
8830UBC-TN	CoFlex TLC Calamine Lite - Lite Compression - 3"	Calamine Foam - 3" x 6 yds.	Compression - 3" x 7 yds.	A6456 & A6452
8830UBC-SC	CoFlex TLC Calamine - Standard Compression - 3"	Calamine Foam - 3" x 6 yds.	Compression - 3" x 7 yds.	A6456 & A6452

Each case contains 8 inner boxes



# MODERATE MOBILITY

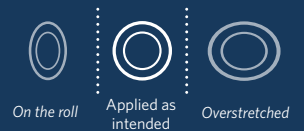
# COFLEX TLC

## COFLEX TLC

Milliken's CoFlex TLC kits give patients more freedom and mobility. Trust Milliken CoFlex TLC to help deliver excellent care and comfort to patients.

### VISUAL INDICATORS

Designed to support application and intended compression



Also available in XL, 2" and 6"

- Short stretch performance for active patients with edema
- Odor and itch control properties
- Visual indicators to guide restorative compression application
- Easy to apply
- Comfortable and breathable
- Lightweight and low profile
- Non-slip support
- Nylon stocking included in each kit



Not made with natural rubber latex

Catalog #	Description	Layer 1 (Unstretched)	Layer 2 (Stretched)	HCPCS Code*
7802TLC-TN	CoFlex TLC Lite - Lite Compression - 4"	Foam - 4" x 3.4 yds.	Compression - 4" x 5.1 yds.	A6441 & A6452
7800TLC-TN	CoFlex TLC - Standard Compression - 4"	Foam - 4" x 3.4 yds.	Compression - 4" x 5.1 yds.	A6441 & A6452
7800TLC-XL	CoFlex TLC XL - Standard Compression - 4"	Foam - 4" x 5.4 yds.	Compression - 4" x 7 yds.	A6441 & A6452
7800TLC-02	CoFlex TLC - Standard Compression - 2"	Foam - 2" x 1.3 yds.	Compression - 2" x 3 yds.	A6441 & A6452
7800TLC-06	CoFlex TLC - Standard Compression - 6"	Foam - 6" x 3.8 yds.	Compression - 6" x 5 yds.	A6441 & A6452

Each case contains 8 inner boxes

Available in Lite & Standard Compressions and Extra Long size



LIMITED  
MOBILITY

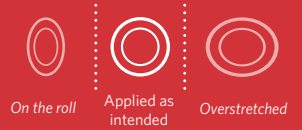
# COFLEX TLC LS

## COFLEX TLC LONG STRETCH

Milliken's CoFlex TLC Long Stretch provides a two-step level of comfort for patients with limited mobility.

### VISUAL INDICATORS

Designed to support application and intended compression



- Odor and itch control properties
- Visual indicators to guide restorative compression application
- Easy to apply
- Comfortable and breathable
- Lightweight and low profile
- Non-slip support
- Nylon stocking included in each kit



Not made with natural rubber latex

Catalog #	Description	Layer 1 (Unstretched)	Layer 2 (Stretched)	HCPCS Code*
7902TLC-TN	CoFlex TLC LS Lite - Lite Compression - 4"	Foam - 4" x 4.4 yds.	Compression - 4" x 8 yds.	A6441 & A6452
7900TLC-TN	CoFlex TLC LS - Standard Compression - 4"	Foam - 4" x 4.4 yds.	Compression - 4" x 8 yds.	A6441 & A6452

Each case contains 8 inner boxes

Available in Lite and Standard Compression

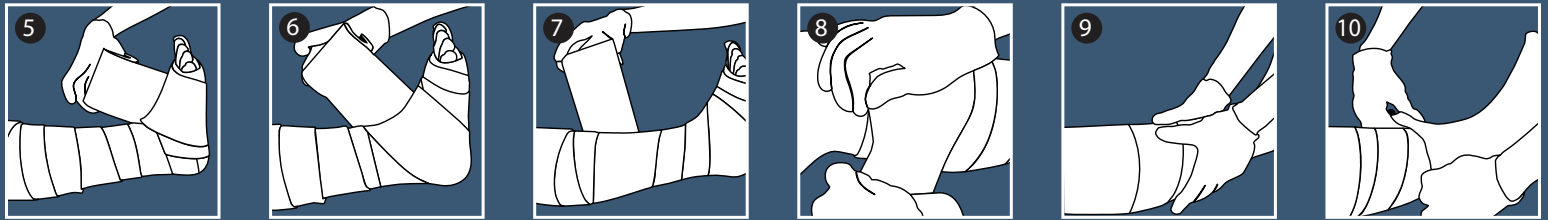
**APPLICATION AND REMOVAL TIPS:** Apply wound dressing and select compression kit based upon patient's ABI.

**Layer 1 - Foam Layer**



See Instructions for Use for step-by-step guidance.

**Layer 2 - Compression Layer**



**ORDERING INFORMATION & HCPCS CODES**

(Healthcare Common Procedure Coding System Codes)

Catalog #	Description	HCPCS Code*
8840UBZ-TN	CoFlex TLC Zinc Lite - Lite Compression - 4"	A6456 & A6452
8840UBZ-SC	CoFlex TLC Zinc - Standard Compression - 4"	A6456 & A6452
8840UBC-TN	CoFlex TLC Calamine Lite - Lite Compression - 4"	A6456 & A6452
8840UBC-SC	CoFlex TLC Calamine - Standard Compression - 4"	A6456 & A6452
8830UBZ-TN	CoFlex TLC Zinc Lite - Lite Compression - 3"	A6456 & A6452
8830UBZ-SC	CoFlex TLC Zinc - Standard Compression - 3"	A6456 & A6452
8830UBC-TN	CoFlex TLC Calamine Lite - Lite Compression - 3"	A6456 & A6452
8830UBC-SC	CoFlex TLC Calamine - Standard Compression - 3"	A6456 & A6452
7802TLC-TN	CoFlex TLC Lite - Lite Compression - 4"	A6441 & A6452
7800TLC-TN	CoFlex TLC - Standard Compression - 4"	A6441 & A6452
7800TLC-XL	CoFlex TLC XL - Standard Compression - 4"	A6441 & A6452
7800TLC-02	CoFlex TLC - Standard Compression - 2"	A6441 & A6452
7800TLC-06	CoFlex TLC - Standard Compression - 6"	A6441 & A6452
7902TLC-TN	CoFlex TLC LS Lite - Lite Compression - 4"	A6441 & A6452
7900TLC-TN	CoFlex TLC LS - Standard Compression - 4"	A6441 & A6452

Each case contains 8 inner boxes

Andover Healthcare, Inc., a subsidiary of Milliken Healthcare Products, LLC  
 9 Fanaras Drive, Salisbury, MA 01952 USA  
 www.healthcare.milliken.com 800.432.6686

CoFlex is a registered trademark of Andover Healthcare, Inc., a subsidiary of Milliken Healthcare Products, LLC.

Document #COMPRESSIONPOR1

\*Centers for Medicare & Medicaid Services (CMS) has verified that the HCPCS codes listed above have been assigned to Andover Healthcare, Inc.

(Updated July 2015)